

## ARTICULO: 2445

### Válvula de Retención a disco extremos roscados

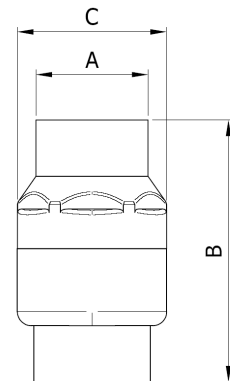
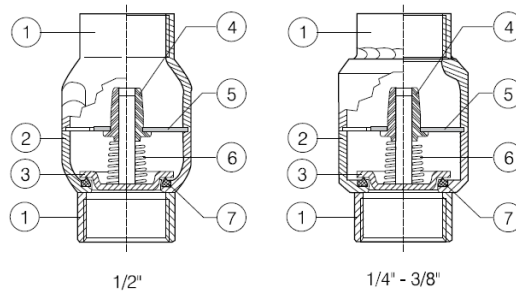
### Disk Check valve, threaded ends

#### Características

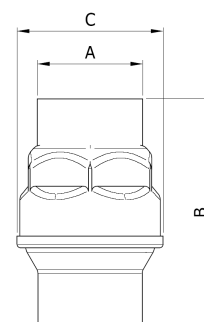
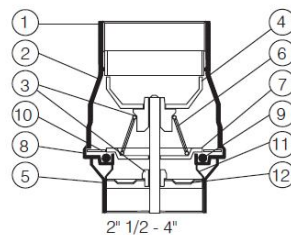
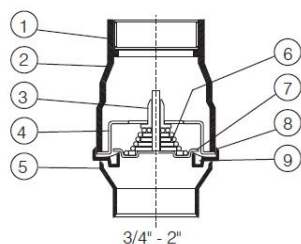
1. Válvula de retención a disco guiado.
2. Construcción en Ac. Inox. 1.4404 (AISI 316L).
3. Asiento de FPM (Viton).
4. Extremos roscados según ISO 228-1.
5. Soldadura a TIG sin aporte de material.
6. Presión de apertura Min. 0.025 Bar / Max. 0.035 Bar.
7. Presión de trabajo máxima 16 bar.
8. No recomendada para fluidos que produzcan excesivas vibraciones (aire, gas, vapor,...).
9. No apta para uso en vacío.
10. Temperatura de trabajo -20 °C + 150 °C.

#### Features

1. Guided Disk Check valve.
2. Made of Stainless Steel 1.4404 (AISI 316L).
3. FPM seat (Viton).
4. Threaded ends according to ISO 228-1.
5. TIG welding without any additional material.
6. Opening pressure Min. 0.025 Bar / Max. 0.035 Bar.
7. Max. Working pressure 16 bar.
8. Not recommended for fluids that produce excessive vibrations (air, gas, steam,...).
9. Not suitable for use in vacuum.
10. Working temperature -20 °C + 150 °C.



Nº	Denominación / Name	Material	Acabado Superficial / Surface Treatment
1	Terminal Roscado / Threaded ends	Acero Inox. / Stainless Steel 1.4404 (AISI 316L)	-----
2	Cuerpo / Body	Acero Inox. / Stainless Steel 1.4404 (AISI 316L)	-----
3	Disco / Disc	Acero Inox. / Stainless Steel 1.4404 (AISI 316L)	-----
4	Buje guia / Guide Bush	PTFE	-----
5	Soporte Buje guia / Guide Bush Support	Acero Inox. / Stainless Steel 1.4401 (AISI 316)	-----
6	Resorte / Spring	Acero Inox AISI 316 / SS 316	-----
7	Asiento / Seal ring	FPM	-----

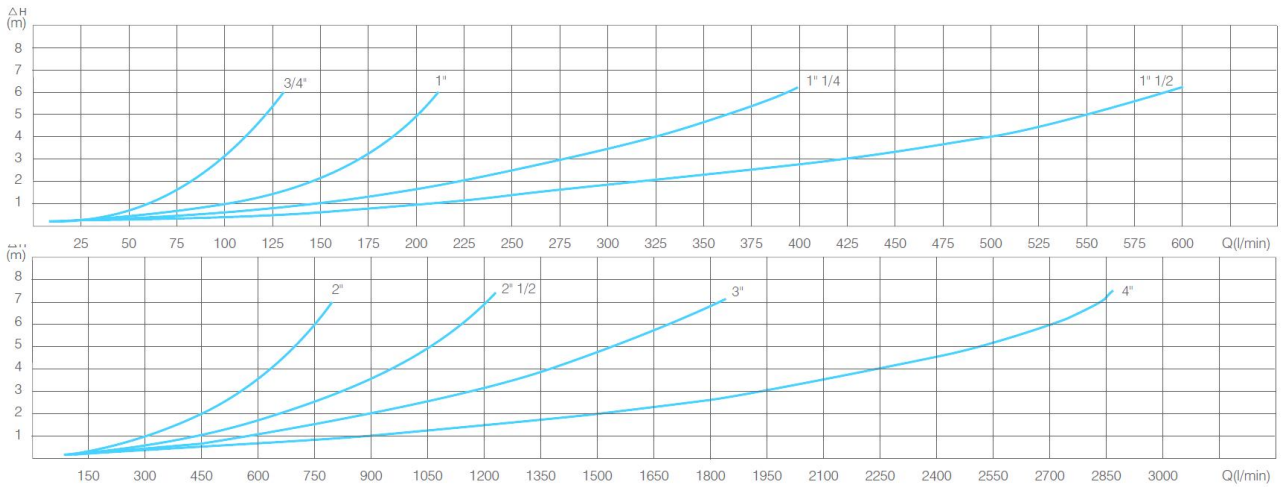
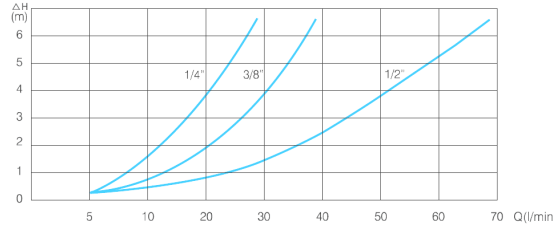


Nº	Denominación / Name	Material	Acabado Superficial / Surface Treatment
1	Terminal Roscado / Threaded ends	Acero Inox. / Stainless Steel 1.4404 (AISI 316L)	-----
2	Cuerpo / Body	Acero Inox. / Stainless Steel 1.4404 (AISI 316L)	-----
3	Buje guía / Guide Bush	PTFE	-----
4	Soporte Buje guía / Guide Bush Support	Acero Inox. / Stainless Steel 1.4404 (AISI 316L)	-----
5	Terminal Roscado / Threaded ends	Acero Inox. / Stainless Steel 1.4404 (AISI 316L)	-----
6	Resorte / Spring	Acero Inox AISI 316 / SS 316	-----
7	Disco / Disc	Acero Inox. / Stainless Steel 1.4404 (AISI 316L)	-----
8	Alojamiento Asiento / Seal ring Housing	Acero Inox. / Stainless Steel 1.4404 (AISI 316L)	-----
9	Asiento / Seal ring	FPM	-----
10	Anillo de asiento / Seal Ring retainer	Acero Inox. / Stainless Steel 1.4404 (AISI 316L)	-----
11	Soporte de Asiento / Seal ring Support	Acero Inox. / Stainless Steel 1.4404 (AISI 316L)	-----
12	Guía Inferior / Outlet side guide	Acero Inox. / Stainless Steel 1.4404 (AISI 316L)	-----

## DIMENSIONES GENERALES / GENERAL DIMENSIONS

Ref	Medida / Size	PN	Dimensiones / Dimensions (mm)			Peso / Weight (Kg)
			A	B	C	
2445 02	1/4"	16	20	55	32	0.105
2445 03	3/8"	16	20	55	32	0.091
2445 04	1/2"	16	25	55	32	0.095
2445 05	3/4"	16	30	67	44	0.129
2445 06	1"	16	36	83	53	0.191
2445 07	1 1/4"	16	45	97	62	0.281
2445 08	1 1/2"	16	51	115	78	0.388
2445 09	2"	16	63	121	89	0.704
2445 10	2 1/2"	16	80	141	113	1.425
2445 11	3"	16	93	164	132	2.085
2445 12	4"	16	120	191	167	3.415

## DIAGRAMA DE PÉRDIDAS DE CARGA / HEAD LOSSES DIAGRAM



## CURVA PRESIÓN TEMPERATURA / PRESSURE TEMPERATURE RATING

